

WOOD COUNTY SCHOLARSHIP AID PROGRAM

*Aligns with WI Shares Child Care Subsidy program

*Intended for parents who are going to school, just miss the income guidelines for WI Shares or have unusually high co-payments

*Families complete an application along with income verification

*Payments are made directly to the child care program

*Currently, the program limits families to a one-time use of funds (Maximum: \$1,000)

*Sometimes an emergency situation makes it difficult for a family to pay a child care bill

*Research shows that high quality child care leads to a better social and academic future for children

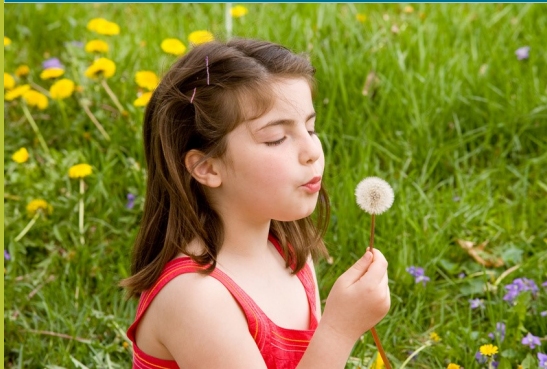
SCHOLARSHIP AID RECIPIENT COMMENTS

"I feel awful when I can't afford to pay for services – especially when it relates to my son. His care is of utmost importance to me."

"The scholarship aid gave me a peace of mind that my child care expenses were being taken care of."

"Thank you. I wouldn't have made it through school without your help!"

Scholarship Aid



About the program ...

For a majority of families in Central Wisconsin, child care is not a luxury but a necessity; and child care can account for a larger percentage of a families' budget than their food, monthly utilities or even a car payment.

Currently there are families in Wood County who do not qualify to receive financial assistance for child care (Wisconsin Shares) under the Wisconsin Works program, more commonly known as W-2. Some families need job training in order to improve their job status while others are "falling through the cracks", considered low income but do not qualify within the federal poverty level guidelines.

The Scholarship Aid program targets families who are between 185% and 200% of the federal poverty level. Limited-term child care assistance is paid directly to the regulated child care provider.

Everyone benefits from Scholarship Aid! Employers will benefit from having skilled, dependable workers with their child care needs being met. Parents will experience greater economic stability while their children have the advantage of a high quality learning environment.

To request an application or for more information please contact Childcaring, Inc.: 715-423-4114 or info@childcaring.org

2017-2018 funding supported by:
Marshfield Area United Way &
United Way of South Wood & Adams Counties

